



VASONA MANAGEMENT

Whitman Villa 25455 Whitman St. Hayward Ca. 94544

tel: 510.582.0188 • fax: 510.582.8605 • whitman@vasonamanagement.com

OFFICE HOURS:

9:00 - 5:00 M-F

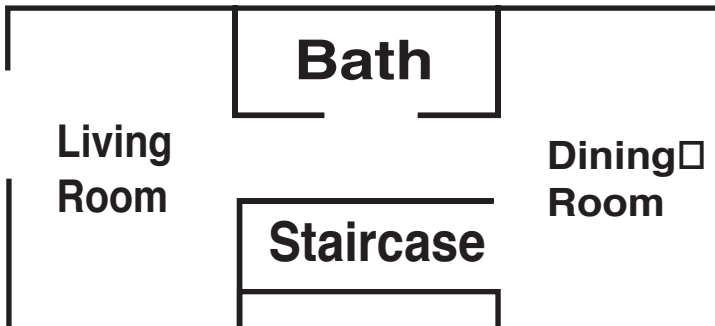
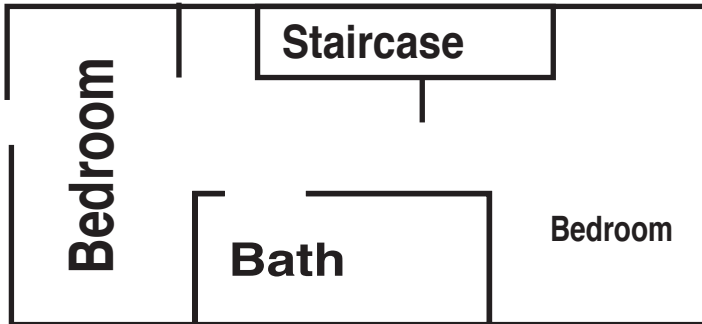
Weekends by Apt.

FEATURES:

- Microwave
- Laundry Facility
- Gated Community
- Newly Remodeled

BEDS	BATHS	SQUARE FEET
2	1.5	926

TWO BEDROOM TOWNHOME



Welcome to Whitman Villa Townhomes where everything is new inside and out. We are conveniently located near shopping centers, schools and major freeways. Our gated community features amenities such as playground, two laundry rooms and assigned parking. Enjoy newly renovated two bedroom townhomes with bright open floor plans and patios. Feature new carpeting, floors, and all new appliances. All townhomes include an electric range, refrigerator, range hood microwave, dishwasher and disposal.



VASONA MANAGEMENT

Directions:

San Francisco:

Take 101 South towards San Jose to the San Mateo Bridge.
Keep going towards downtown Hayward and turn right on Silva Avenue.
Turn left onto Sycamore Ave.,
Sycamore Ave. turns into Whitman Street, we are on the right hand side.
We are at 25455 Whitman Street.

Oakland:

Take 880 South towards San Jose.
Exit East on Tennyson Road.
Turn left onto Whitman Street.
We are at 25455 Whitman Street.

San Jose:

Take 880 North towards San Francisco.
Exit East on Tennyson Road.
Turn left onto Whitman Street.
We are at 25455 Whitman Street.

San Mateo:

Take 92 East (San Mateo Bridge) towards Hayward.
Turn right onto Silva Ave.
Turn left at Sycamore Ave., Sycamore Ave, turns into Whitman Street.
We are at 25455 Whitman Street.

