



VASONA MANAGEMENT

Redwood Plaza 38730 Lexington Street Fremont CA 94536

tel: 510.796.3355 • fax: 510.796.3386 • rwplaza@vasonamanagement.com

OFFICE HOURS:

8:30-5:30 M-F

Weekends by appt.

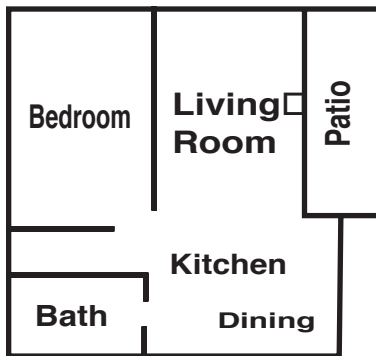
FEATURES:

- Unfurnished
- Washer/Dryer facility
- Covered Parking
- Heated Pool

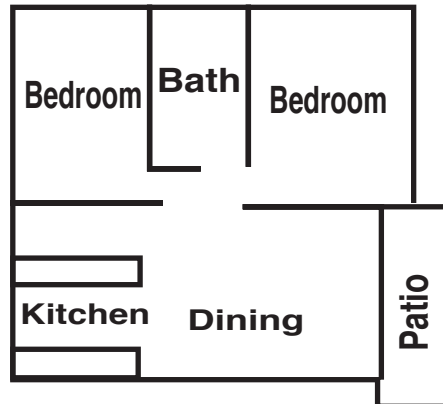
BEDS	BATHS	SQUARE FEET
1	1	750
2	1	965
2	2	1200
3	2	?

Value in the Hub of Fremont. Welcome to Redwood Plaza Apartments.... just a short walk to Fremont Hub shopping center. A tranquil garden setting awaits you at this quiet one and two bedroom apartment community. Redwood Plaza Apartments is located just minutes from 880 freeway and the Dumbarton Bridge and is close to BART, schools and Lake Elizabeth. All apartment homes are extra large with some up to 1,200 square feet. They feature updated interiors with plush carpet, ceiling fans, mirrored closet doors and all electric kitchens with dishwashers and microwaves. Cozy fireplaces available in selected floor plans. Relax in the pool or on your private balcony. Reserved parking is available for all residents.

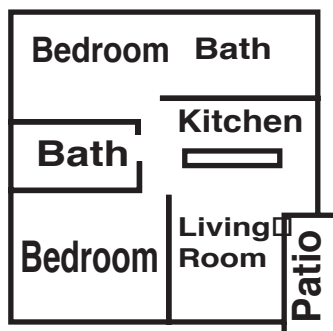
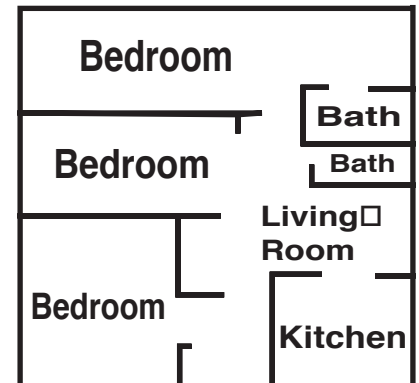
ONE BEDROOM



TWO BEDROOMS



THREE BEDROOM





Directions:

Directions from all major approaches to the property:

From San Francisco:

Take 101 South towards San Jose.

Take hwy 92/San Mateo Bridge turn off.

Go across San Mateo Bridge to 880 South exit.

Take 880 South towards San Jose to the Mowry exit.

Turn left onto Mowry. Proceed down Mowry to Lexington Street and turn left on to Lexington Street.

We are on the left at 38730 Lexington Street.

From San Jose:

Take 880 North towards Oakland to the Mowry exit.

Turn right onto Mowry.

Proceed down Mowry to Lexington Street and turn left on Lexington Street.

We are on the left at 38730 Lexington Street.

From Oakland:

Take the I-880 South towards San Jose to the Mowry exit.

Turn left onto Mowry.

Proceed down Mowry to Lexington Street and turn left on to Lexington Street

We are on the left at 38730 Lexington Street

