



# VASONA MANAGEMENT

Serra Commons 1580 Southgate Avenue. Daly City, Ca.94015  
tel: 650.756.1405 fax: 510.792.8824 email: serracommons@vasonamanagement.com

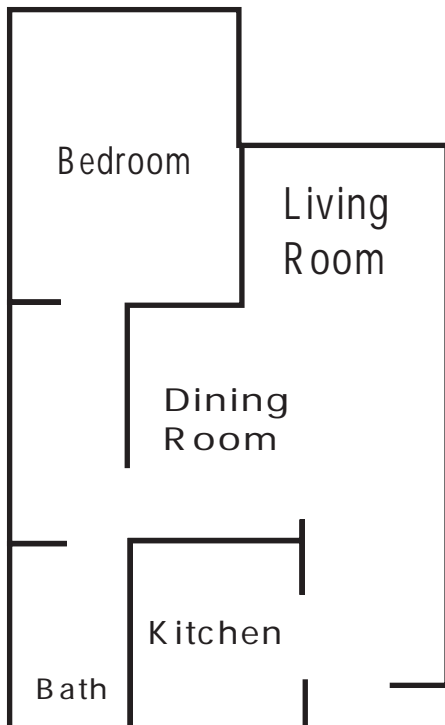
OFFICE HOURS:  
8:00 - 5:00 M-F  
Weekends by Apt.

- FEATURES:
- Unfurnished
  - Gated Community
  - Washer/Dryers facility

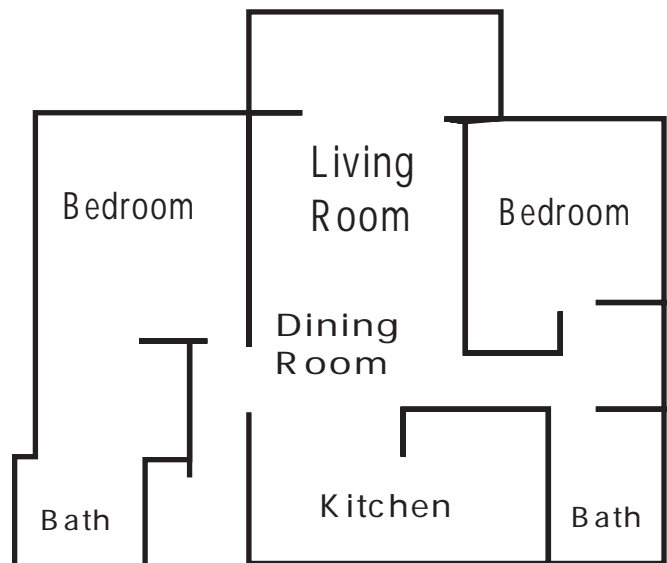
BEDS	BATHS	SQUARE FEET
1	1	577
1	1	616
2	2	938

Welcome to the Serra Commons Apartments, where many of our newly renovated apartment homes feature remodeled kitchens with natural maple cabinetry, custom Corian counters, stainless steel double sinks, electric stoves and built-in microwave ovens. Decorator ceiling fans grace the adjoining dining areas. Very conveniently located near shopping centers, regional mall, elementary, middle and high schools. Easy access to freeways and minutes to beaches and the Pacific Ocean. All of our apartment homes feature roomy patios or balconies, many overlooking a sunny tree-lined green belt. Controlled access gates with elevator access and inside corridors make Serra Commons an ideal apartment community.

## ONE BEDROOM



## TWO BEDROOM





# VASONA MANAGEMENT

## From San Jose:

Take US 101 South towards San Jose to I-280 South.  
Take the exit towards Eastmoor Ave/ Mission St.  
Turn left onto Sullivan Ave.  
Turn right onto Southgate Ave.  
We are at 1580 Southgate Avenue.

## From Oakland:

Take the I-580 West towards San Francisco/ Hayward to I-80 West  
Then take US 101 South to I-280 South.  
Take the exit towards Eastmoor Ave/ Mission St.  
Turn left onto Sullivan Ave.  
Turn right onto Southgate Ave.  
We are at 1580 Southgate Avenue.

## From San Francisco:

Take the US 101 North towards San Francisco  
Merge onto US 101 North.  
Take I-380 West to I-280 North.  
Then take the Hickey Blvd. exit towards Colma.  
Turn right onto Hickey Blvd.  
Turn left onto Junipero Serra Blvd.  
Turn left onto Southgate Ave.  
We are at 1580 Southgate Avenue

