



# VASONA MANAGEMENT

**Palace** 1731 Pine Ave Concord Ca. 94520

tel: 925.969.0096 • fax: 925.686.4381 • palace@vasonamanagement.com

**OFFICE HOURS:**

9:00 - 5:00 M-F Weekends by Apt.

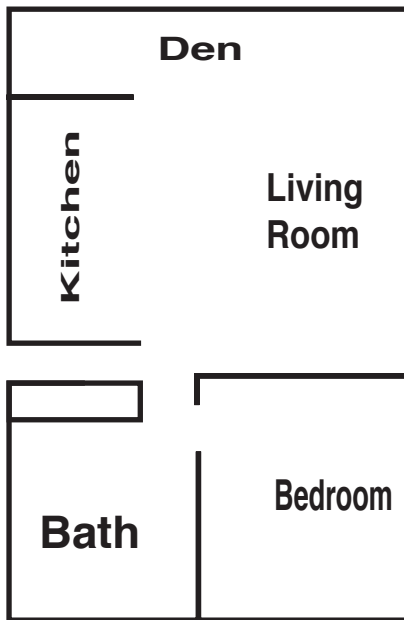
**FEATURES:**

- Fireplace
- Covered Parking
- Gated Community
- Laundry Facilities
- New Appliances
- Micro-Wave Range Hood
- Lighted Ceiling Fans

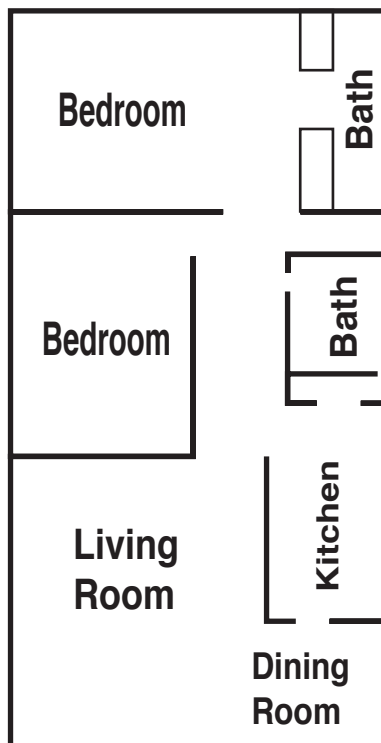
BEDS	BATHS	SQUARE FEET
1	1	830
2	2	1170
3	2	1170

Sophisticated living is only a start to this plus signature up-scale community. When you think and speak Palace Apartment Homes, you are dealing with quality, first class style, done just the way you like it. Everyone who resides at the Palace, proudly announces "this is where I live". There is an apartment home waiting for you, please join us.

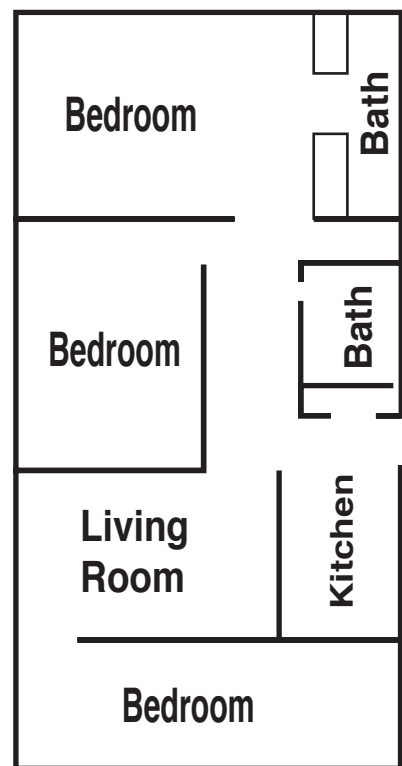
## ONE BEDROOM



## TWO BEDROOM



## THREE BEDROOM





# VASONA MANAGEMENT

## From I-680

From I-680, exit 242 to Clayton Road exit

go east, and turn right on Pine Street

the Palace is on your right,

pull on in (the vehicle gate is open for you).

Look for dark burgundy awnings with a two tier water fountain at 1731 Pine Street.

