



VASONA MANAGEMENT

Laguna Ellis 1776 Laguna Rd. Concord Ca 94520

tel: 925.676.3336 fax: 925.6763386 email: concord1@vasonamanagement.com

OFFICE HOURS:

8:30-5:30 M-F

Weekends by appt.

FEATURES:

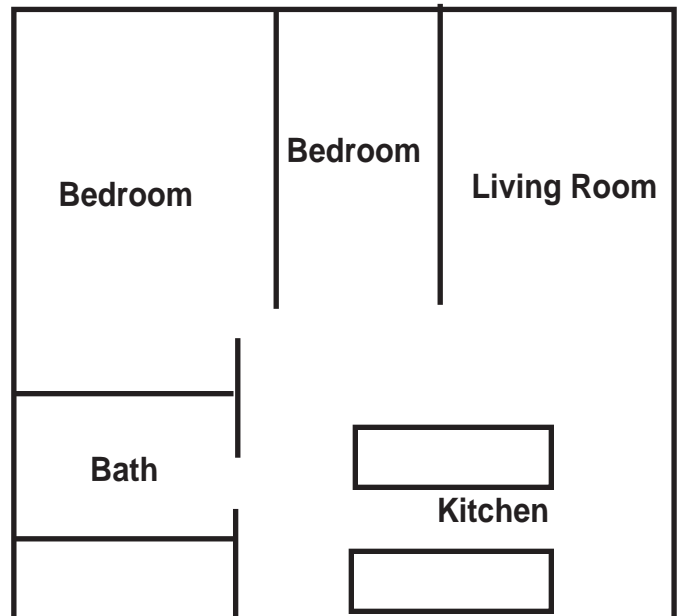
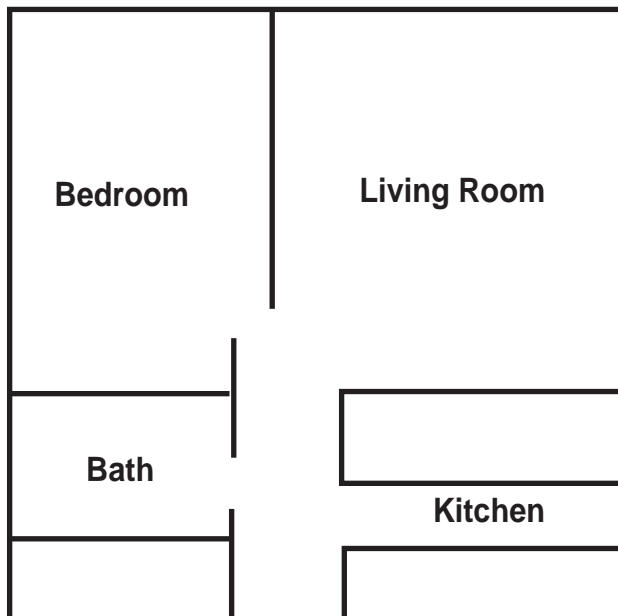
- Unfurnished
- Gated Community
- Washer/Dryers facility
- Covered Parking
- Elevator
- Pool

| BEDS | BATHS | SQUARE FEET |
|------|-------|-------------|
| 1 | 1 | 650 |
| 2 | 1 | 750 |

A beautiful garden setting makes Laguna Ellis an ideal apartment community. Newly remodeled apartment homes have upgraded kitchens with built in microwaves, dishwasher and decorator ceiling fans throughout. One and two bedroom family size apartments are available. Residents have use of laundry facilities, controlled access gate and reserved parking. We are conveniently located off Highway 242 with in walking access to BART, shopping and restaurants.

ONE BEDROOM

TWO BEDROOM





VASONA MANAGEMENT

Laguna Ellis 1776 Laguna Rd. Concord Ca 94520

tel: 925.676.3336 • fax: 925.6763386 • concord1@vasonamangement.com

From San Jose:

Take 680 North towards Sacramento.
Take CA-242 North to Clayton Road exit towards Concord.
Turn right on Ellis Street.
Right on Laguna Street.
We're on the left at 1776 Laguna Street.

From San Francisco:

Take Hwy 101 North to 80 East towards Bay Bridge.
Take 580 East ramp towards Oakland then to 24 East to 680 North.
Take CA-242 North to Clayton Road exit towards Concord.
Turn right on Ellis Street.
Right on Laguna Street.
We're on the left at 1776 Laguna Street.

From Sacramento:

Take 80 West to 680 South towards Benicia/ San Jose.
Exit left on Willow Pass Road.
Right on Market Street then left on Clayton Road.
Right on Ellis Street.
Right on Laguna Street.
We're on the left at 1776 Laguna Street.

